

Order of Worship
Sunday, May 17, 2020

Welcome
Wines

Rev. Tracy McNeil

Greeting

Rev. Dr. Michelle Holmes Chaney

Opening Hymn

Love Divine, All Loves Excelling

see song sheet below

Opening Prayer

O Risen Christ,
you give to us the Spirit of truth
who is present with us always.
Make our hearts bold with love for one another and for your world.
Give us fresh resolve to keep your commandments
so that we may walk in the ways of justice and peace,
united in your unending grace. Amen.

Scripture

John 14:15-21

Kim Johnson

Sermon

Love Connections

Rev. Dr. Sarah Calvert

Anthem

O Jesus, I Have Promised
Chancel Choir

Casner

Stewardship Moment

Rev. Dr. Sarah Calvert

Prayer

Cynthia Lopynski

Closing Hymn

In Christ Alone

see song sheet below

Benediction

Rev. Tracy McNeil Wines

Postlude

Tuba Tune

Lang

*You are invited to make your offering to support the ministry and mission of Clarendon UMC.
Simply return to the Online Worship page of our website and
click the button marked "Make your online offering."*

We are grateful to the Bi-District Staff of Arlington and Alexandria of the United Methodist Church for lending their talents to worship this morning.

The **Rev. Dr. Sarah Calvert** is a United Methodist elder serving as the **District Superintendent** of the Arlington District of the Virginia Conference of the United Methodist Church. Sarah grew up all over as a military kid, ending up in Fairfax, Va., graduating from Oakton High School. She has a BA in Economics from Mary Washington College in Fredericksburg and then became an attorney with her own firm in Fairfax after receiving her law degree from George Mason Law School. After an overwhelming and literal calling from God, Sarah attended Wesley Theological Seminary receiving her Masters of Divinity there and then again a few years later went back for a Doctorate in Church Leadership. Her dissertation work was on the formation of clergy peer learning groups. Sarah served as associate pastor for 6 years at a large church in Loudoun, planting a second site for them and developing outreach into the community. She then spent 3 years as a sole pastor, helping revitalize a small church in Luray, Virginia. Most recently, she served the Bi-Districts of Arlington and Alexandria as a revitalizer and leadership developer. Sarah has one son, Matthew, 26, and is owned by a rescued boxer named Sugar Ray.

Michelle Holmes Chaney, Coordinator, Revitalization and Leadership Development, provides resources and training to walk alongside churches in their ministries as well as coordinates the Next Level Innovations project.

Cynthia Lopynski, Program Coordinator, plans and develops training opportunities for clergy and laity across the Districts.

Kim Johnson, Communications Coordinator, is responsible for our District websites and all print and digital communications as well as our annual Bi-District Training Day.

384 Love Divine, All Loves Excelling

1. Love di - vine, all loves ex - cell - ing, joy of heaven, to
 2. Breathe, O breathe thy lov - ing Spir - it in - to ev - ery
 3. Come, Al - might - y to de - liv - er, let us all thy
 4. Fin - ish, then, thy new cre - a - tion; pure and spot - less

earth come down; fix in us thy hum - ble dwell - ing;
 trou - bled breast! Let us all in thee in - her - it;
 life re - ceive; sud - den - ly re - turn and nev - er,
 let us be. Let us see thy great sal - va - tion

all thy faith - ful mer - cies crown! Je - sus, thou art
 let us find that sec - ond rest. Take a - way our
 nev - er - more thy tem - ples leave. Thee we would be
 per - fect - ly re - stored in thee; changed from glo - ry

all com - pas - sion, pure, un - bound - ed love thou art; vis - it
 bent to sin - ning; Al - pha and O - me - ga be; end of
 al - ways bless - ing, serve thee as thy hosts a - bove, pray and
 in - to glo - ry, till in heaven we take our place, till we

REBIRTH AND THE NEW CREATURE

The image shows a musical score for a hymn. It consists of two staves: a treble clef staff at the top and a bass clef staff at the bottom. The key signature is one flat (B-flat), and the time signature is common time (C). The melody is written in the treble staff, and the bass line is in the bass staff. The lyrics are printed between the two staves, with lines of music above and below the text. The lyrics are: "us with thy sal - va - tion; en - ter ev - ery trem - bling heart. faith, as its be - gin - ning, set our hearts at lib - er - ty. praise thee with - out ceas - ing, glo - ry in thy per - fect love. cast our crowns be - fore thee, lost in won - der, love, and praise."

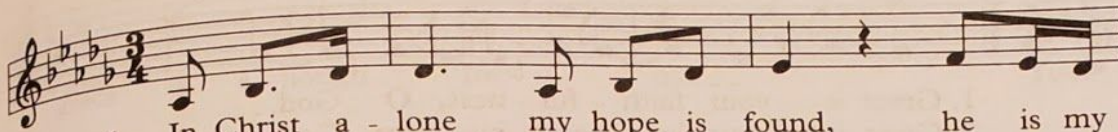
WORDS: Charles Wesley, 1747
MUSIC: John Zundel, 1870

BEECHER
87.87 D

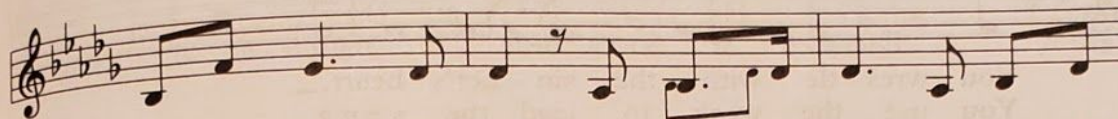
Alt: tune: HYFRYDOL

In Christ Alone

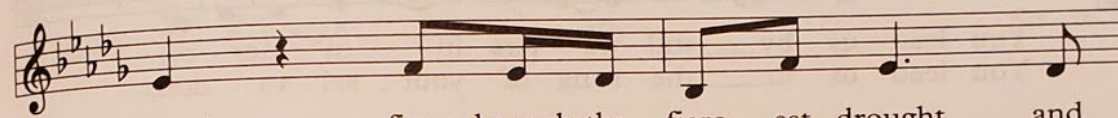
3105



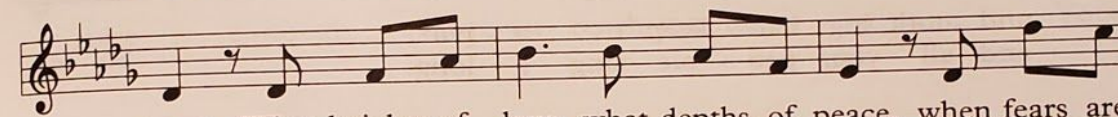
1. In Christ a - lone my hope is found, he is my
2. In Christ a - lone, who took on flesh, full - ness of
3. There in the ground his bod - y lay, Light of the
4. No guilt in life, no fear in death, this is the



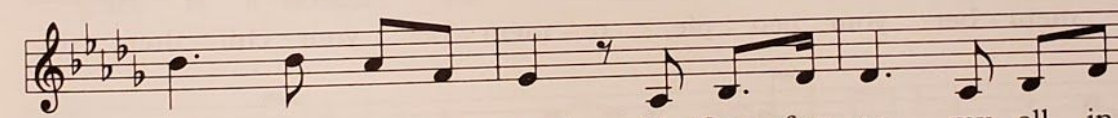
light, my strength, my song. This Cor - ner - stone, this sol - id
 God in help - less babe. This gift of love and righ - teous -
 world by dark - ness slain. Then burst - ing forth in glo - rious
 power of Christ in me. From life's first cry to fi - nal



ground, firm through the fierc - est drought and
 ness scorned by the ones he came to
 day, up from the grave he rose a -
 breath, Je - sus com - mands my des - ti -



storm. What heights of love, what depths of peace, when fears are
 save. 'Til on that cross as Je - sus died the wrath of
 gain! And as he stands in vic - to - ry, sin's curse has
 ny. No power of hell, no scheme or plan can ev - er



stilled, when striv - ings cease! My Com - fort - er, my all in
 God was sat - is - fied; for ev - ery sin on him was
 lost its grip on me. For I am his and he is
 pluck me from his hand. 'Til he re - turns or calls me



all, here in the love of Christ I stand.
 laid. Here in the death of Christ I live.
 mine, bought with the pre - cious blood of Christ.
 home, here in the power of Christ I'll stand.

IN CHRIST ALONE
LMD

WORDS: Keith Getty and Stuart Townend
 MUSIC: Keith Getty and Stuart Townend

© 2002 Thankyou Music (PRS), admin. worldwide at EMICMGPublishing.com excluding Europe
 which is admin. at kingswaysongs.com